

Enchantment

FABRICS BY LONNI ROSSI



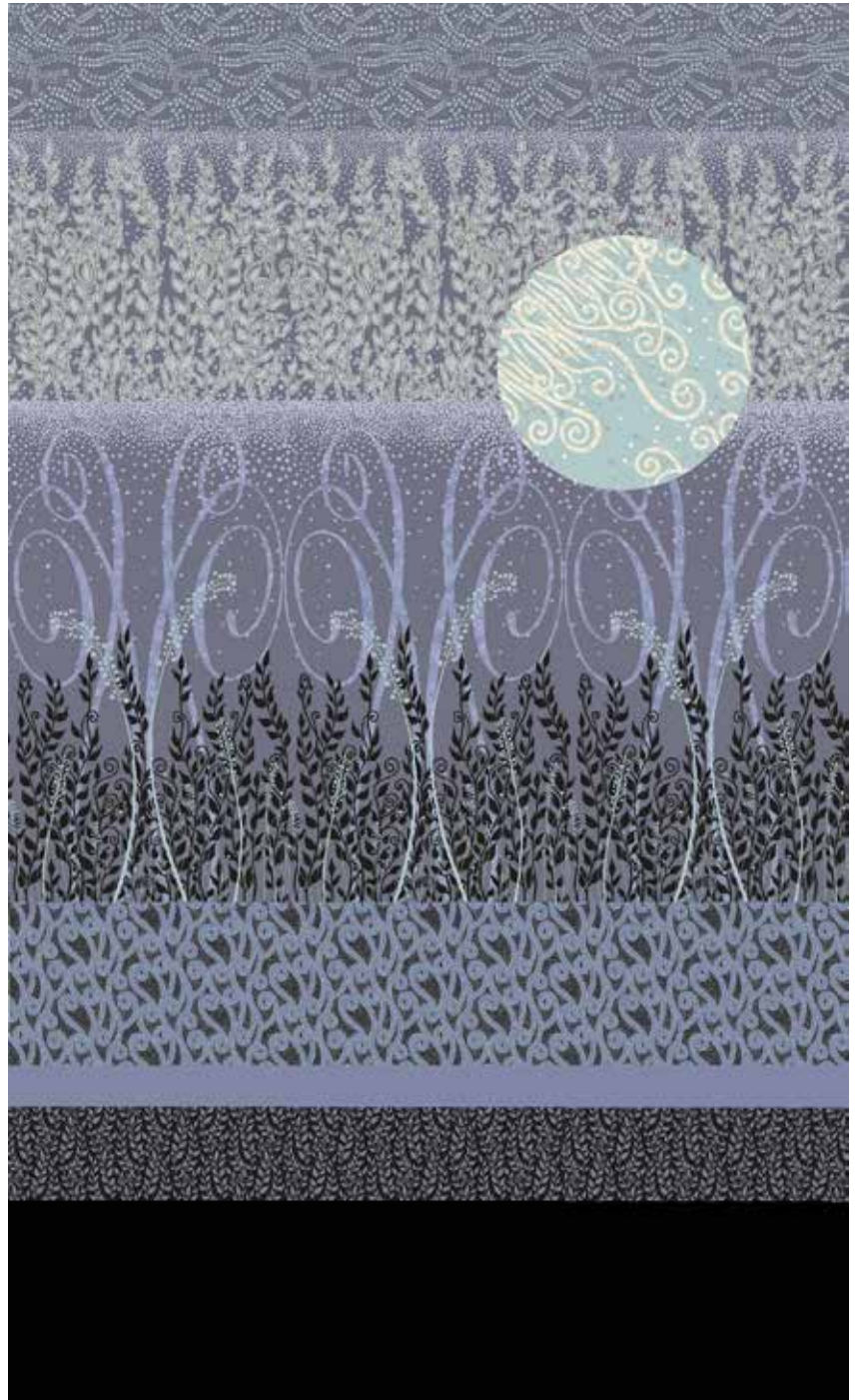
Enchantment at Midnight Quilt
designed by: **Lonni Rossi**

Quilt Size: **36" x 60"**

andoverfabrics.com

About Enchantment

The Enchantment Collection celebrates the beauty of leaves, vines, fiddlehead ferns, and lots of dots and spirals – with silver and gold metallic accents. Three colorways are represented: *Morning Light*, *Sunset* and *Midnight*. Your creative juices will flow like the river running through Lonni's fantasy enchanted forest!



andover

•
•
•
•
•
makower uk
The Henley Studio

Free Pattern Download Available

1384 Broadway New York, NY 10018
Tel. (800) 223-5678 • andoverfabrics.com

Enchantment at Midnight Quilt



Introducing Andover Fabrics new collection: **Enchantment** by Lonni Rossi

Quilt designed by Lonni Rossi

Quilt finishes 36" x 60"

Create an easy and beautiful quilt that leaves room to add your own favorite creative embellishments. The magical quilt is perfect for any time of day, although the yellow and orange colorways are perfect for stitching an Enchantment at Dawn or Enchantment at Sunset quilt.

Fabric Requirements

| Fabric | | Yardage | Charcoal | Orange | Yellow |
|------------------|------------------|-------------|----------|----------|----------|
| Fabric A | setting | 1 1/8 yards | 7366-MC | 7366-MO | 7366-MY |
| Fabric B | setting | 1 1/8 yards | 7367-MC | 7367-MOP | 7367-MY |
| Fabric C | moon | 3/8 yard | 7368-MCT | 7268-MOP | 7368-MYC |
| Fabric D | setting | 1/4 yard | 7369-MC | 7369-MO | 7369-MYC |
| *Fabric E | setting | 1/4 yard | 7370-MCK | 7370-MOP | 7370-MY |
| Fabric F | setting | 1/4 yard | 7371-MC | 7371-MOY | 7371-MY |
| Fabric G | setting | 1/8 yard | 5468-B2 | 5468-E | 5468-O4 |
| Fabric H | setting, binding | 1 yard | 5468-DK | 5468-O | 5468-C1 |
| Backing | | 2 yards | 7370-MCK | 7370-MOP | 7370-MY |

Cutting Directions

Note: Read assembly directions before cutting patches. All measurements are cut sizes and include 1/2" seam allowances. WOF designates the width of fabric from selvedge to selvedge (approximately 42" wide).

- Fabric A** Fussy-cut (1) strip 23" x length of fabric, cut along one selvedge
- Fabric B** Fussy-cut (1) strip 13" x length of fabric, cut along one selvedge
- Fabric C** Cut (1) circle 11" diameter (finished size) for moon
- Fabric D** Cut (1) strip 7" x WOF
- Fabric E** Cut (1) strip 5" x WOF
- Fabric F** Cut (1) strip 6" x WOF
- Fabric G** Cut (1) strip 3" x WOF
- Fabric H** Cut 6 strips 3 1/2" x WOF for invisible binding (read Step 4 first)
Cut (1) strip 10" x WOF
- Backing** Cut (1) panel 68" x WOF

Making and Assembling the Quilt

1. Referring to the quilt photograph, join the panels in the order shown using 1/2" seam allowances. The use of a walking (even feed) foot will prevent the panels from shifting as they are joined. Press seam allowances in one direction or open. Trim sides to make a quilt that is about 36 1/2" wide.
2. If you choose to fuse the appliqué, draw an 11" diameter circle onto the paper side of paper-backed fusible web. Following manufacturer's instructions, fuse the pattern to the wrong side of Fabric C. Cut out the moon on the drawn line. Position and fuse the moon to the quilt, referring to the quilt photo for placement. Finish the edge with a decorative machine stitch using contrasting thread, or use an invisible thread with a blind appliqué machine stitch.

Finishing the Quilt

3. Layer the quilt with batting and backing and baste. Quilt in the ditch between the strips and around the moon. Quilt each section with free-motion quilting around the leaves, stems, and other major design lines. Lonni suggests using metallic thread. Quilt the backgrounds to add texture.
4. Bind the quilt in the usual manner (cut strips 2 1/2" wide for double-fold binding). Or, follow the steps to make Lonni's invisible binding with 3 1/2"-wide strips. Since this is a wall-size quilt, be sure to add a hanging sleeve on the back.

Enchantment at Midnight Quilt

Invisible Binding

These directions are for binding that doesn't show on the front of the quilt. Strips of fabric are stitched around the quilt to make a facing with mitered corners. The entire facing is turned to the back of the quilt. These directions work for any quilt when you want the design to be uninterrupted all the way to the edge of the quilt.

Step 1

When you have finished quilting, trim the edges of the quilt so all sides are straight and the corners are square.

Step 2

Measure through the center of your quilt from the top raw edge to the bottom raw edge. Note this measurement. It will be the length of your side strips. Similarly, measure from side to side across the center of the quilt. This will be the length of your top and bottom strips. Cut the number of 3½"-wide strips needed to construct the facing strips. Piece them with diagonal seams as necessary to make 2 side strips and 2 top/bottom strips the exact length needed for your quilt.

Step 3

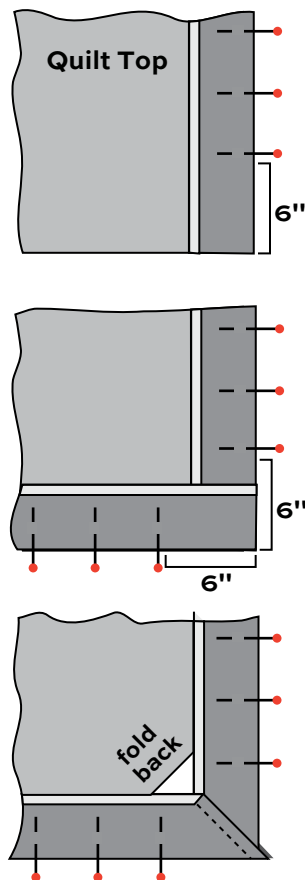
Press ½" to the wrong side on one long edge of each strip.

Step 4

Lay quilt face up on a table. Right sides together, align the unpressed edge of one strip with the corresponding edge of the quilt top, matching centers. Starting at the center, pin the binding to the quilt to within 6 inches of each corner. Continue in this manner until you have pinned the binding strips to all four edges of the quilt top.

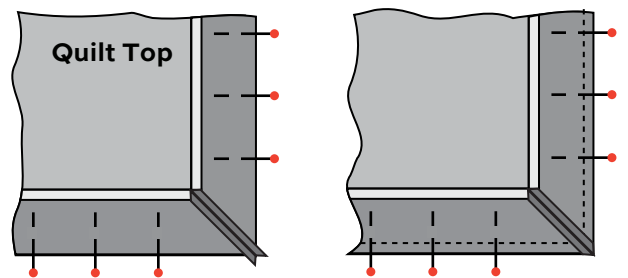
Step 5

Using a 45° triangle ruler, mark the sewing line for the miter at the end of each strip, remembering to add the seam allowance. With right sides together, pin corners and sew the miters without removing the pinned binding from the quilt. Trim off the excess fabric, leaving a ¼" seam allowance.



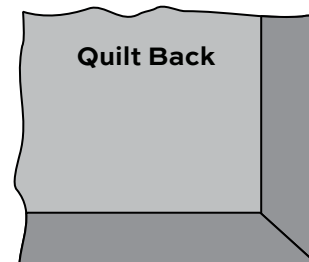
Step 6

Finger press the seam allowances open and finish pinning the corners to the quilt. Using a walking foot, sew the binding to the quilt using a ⅜" seam all the way around all four sides. Trim the seam allowances at the corners.



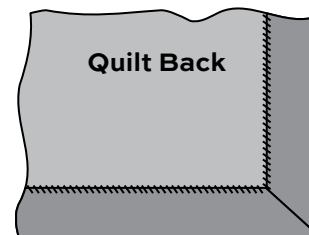
Step 7

Turn the binding to the back of the quilt, making sure the corners are fully turned to a nice crisp point.



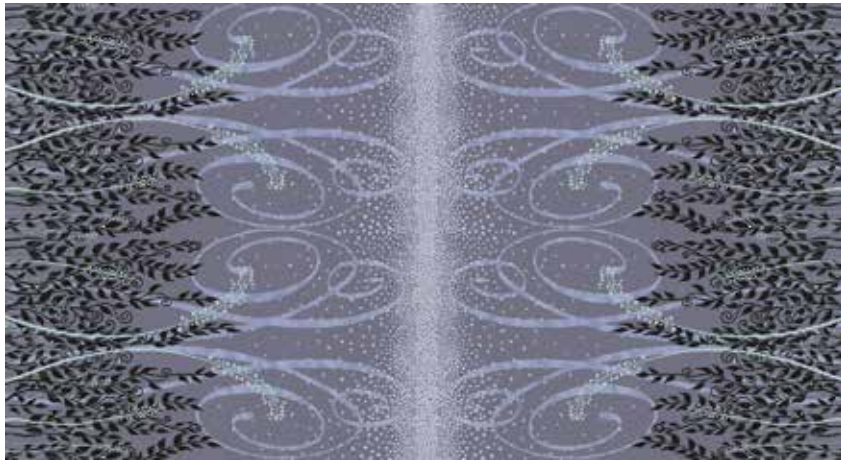
Step 8

Steam press so the edge is straight and the quilt lies flat. Whip stitch the folded edge to back of quilt by hand, being careful not to let any stitches show through to the front of the quilt.

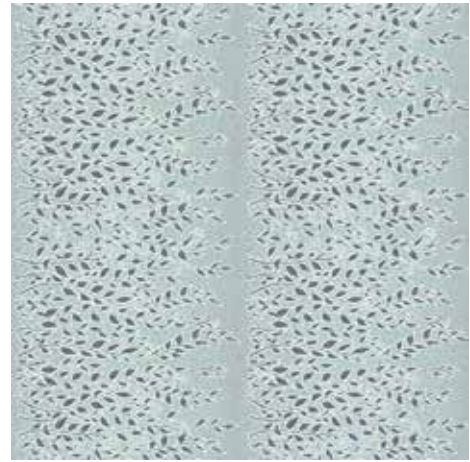


Enchantment

FABRICS BY LONNI ROSSI



7366-MC*



7367-MCT



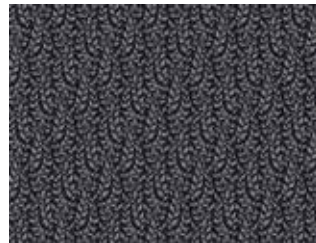
7368-MCT*



7367-MC*



7369-MC*



7370-MCK*



7371-MC*



7371-MCL

Blend with fabrics from
Raindrops by Lonni Rossi



5468-B2*



5468-C



5468-DK*



5468-LT2

*Indicates fabrics used in featured quilt pattern. Fabrics shown are 10% of actual size.

andover

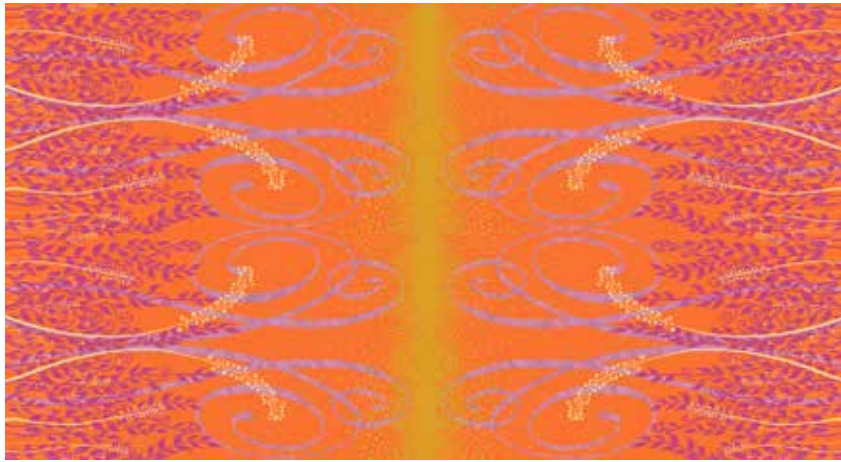
makower uk
The Henley Studio

Free Pattern Download Available

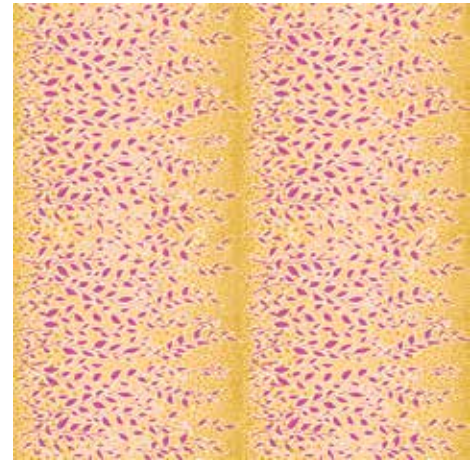
1384 Broadway New York, NY 10018
Tel. (800) 223-5678 • andoverfabrics.com

Enchantment

FABRICS BY LONNI ROSSI



7366-MO



7367-MOP



7368-MOP



7367-MOY



7369-MO



7370-MOP



7371-MO



7371-MOY

Blend with fabrics from
Raindrops by Lonni Rossi



5468-E



5468-O



5468-P1



5468-Y1

andover



makower uk
The Henley Studio

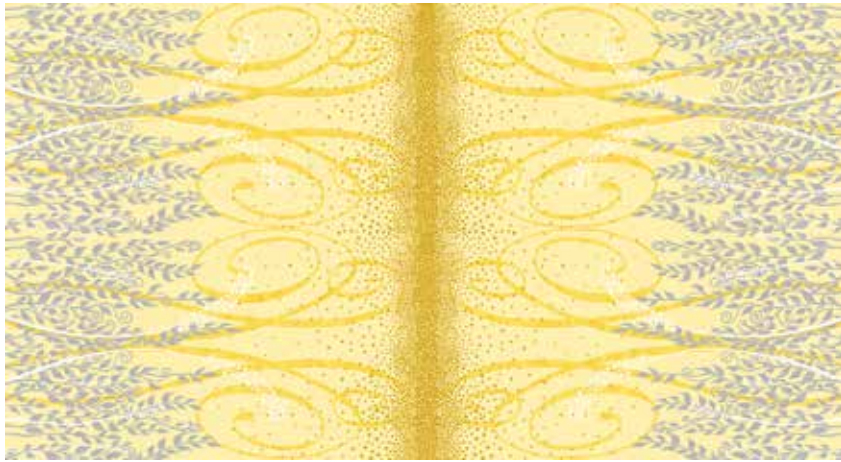
Fabrics shown are 10% of actual size.

Free Pattern Download Available

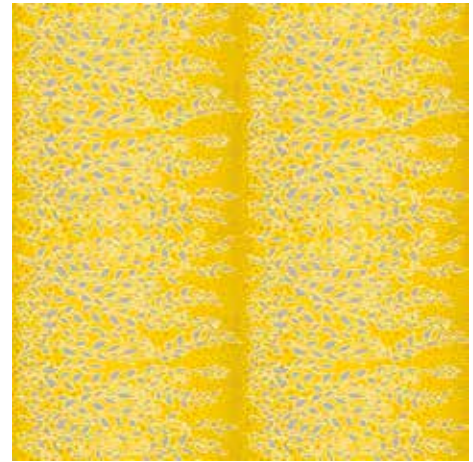
1384 Broadway New York, NY 10018
Tel. (800) 223-5678 • andoverfabrics.com

Enchantment

FABRICS BY LONNI ROSSI



7366-MY



7367-MY



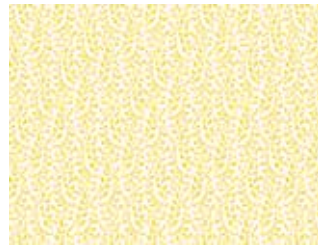
7368-MYC



7367-MYC



7369-MYC



7370-MY

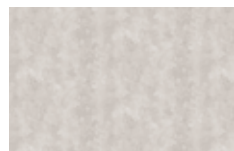


7371-MY

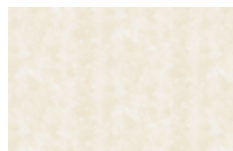


7371-MYC

Blend with fabrics from
Raindrops by Lonni Rossi



5468-C1



5468-L



5468-O4



5468-Y3

Fabrics shown are 10% of actual size.

Free Pattern Download Available

1384 Broadway New York, NY 10018
Tel. (800) 223-5678 • andoverfabrics.com

andover

•
•
•
•
makower uk
The Henley Studio