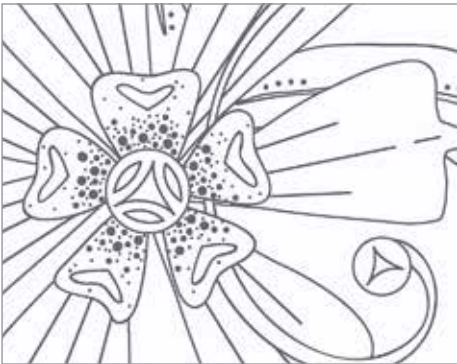
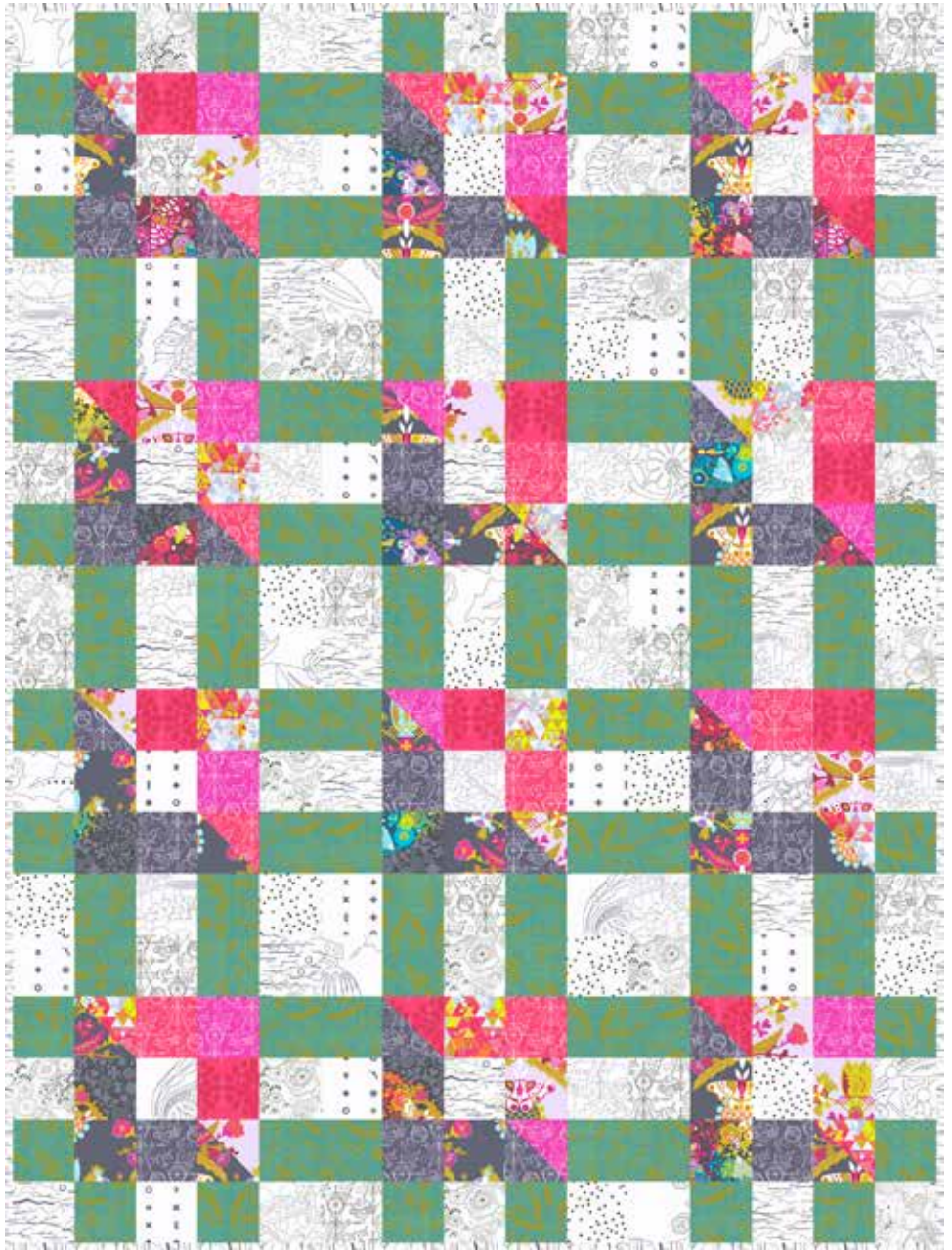


Abacus

BY ALISON GLASS



Quilt designed by: **Alison Glass**
Quilt Size: 60" x 80"
andoverfabrics.com



About Abacus

Abacus images cross cultures and time periods. From ancient to futuristic, the line work is arranged on a subtle set of white backgrounds. Abacus fills the need for lighter choices within the range of Alison Glass fabrics.

andover : makower uk
The Henley Studio

Free Pattern Download Available

1384 Broadway New York, NY 10018
Tel. (800) 223-5678 • andoverfabrics.com

Abacus Quilt



Introducing Andover Fabrics new collection: **ABACUS** by Alison Glass

Quilt designed by Alison Glass

You can count the time spent making this quilt in hours, not days. The over-sized blocks are made with the simplest of piecing. The subtle arrangement of the half-square triangles gives the quilt an interesting diagonal design element.

Quilt finishes 60" x 80"
12 Blocks: 20" x 20"

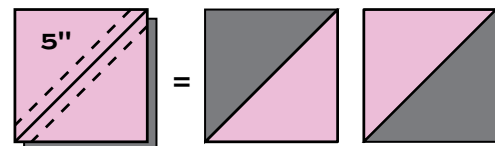
Fabric Requirements

		Yardage	Fabric
Fabric A	blocks	1 yard	8072-C
Fabric B	blocks	1 $\frac{5}{8}$ yards	7866-LG
3 Dk. Gray	blocks	$\frac{3}{8}$ yard each	
	7752-N	7864-C	7865-C
6 White/Gray	blocks	$\frac{3}{8}$ yard each	
	8069-C	8070-C	8071-C
	8073-C	8074-C	8075-C
5 Pink	blocks	fat $\frac{1}{4}$ yard each	
	7752-E	7752-R	7865-CE
	7867-C	7868-CR	
Backing		3 $\frac{3}{4}$ yards	8070-C

*includes binding

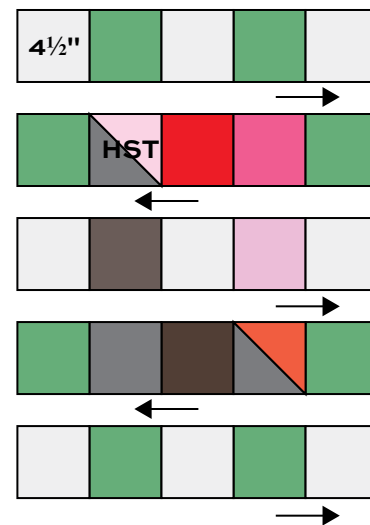
Making the Quilt

1. The blocks use half-square triangles (HST) that finish 4" square. Use your favorite method to make HST, or follow these directions. Draw a diagonal line on the wrong side of each pink 5" square (Diagram 1). Place a marked square on a dark gray square, right sides together. Sew $\frac{1}{4}$ " seam on each side of the marked line; cut apart on the marked line. Press open to make 2 pieced HST. Trim each to 4 $\frac{1}{2}$ " square. Make 24 HST total, mixing the prints as you wish.



HST - Make 24

2. Referring to the Block diagram, arrange 8 Fabric B green 4 $\frac{1}{2}$ " squares, 9 white/gray squares, 3 dark gray squares, 3 pink squares, and 2 HST into 5 rows in the order shown. Be sure to turn the HST correctly. Press the seam allowances between patches in the direction of the arrows on the diagram. Join the rows. Make 12 blocks.



Block - Make 12

Cutting Directions

Note: Read assembly directions before cutting patches. All measurements are cut sizes and include $\frac{1}{4}$ " seam allowances. A fat $\frac{1}{4}$ is an 18" x 20"-22" cut. WOF designates the width of fabric from selvedge to selvedge (approximately 42" wide).

Fabric A

Cut (8) strips 2 $\frac{1}{2}$ " x WOF for binding
Cut (16) squares 4 $\frac{1}{2}$ " x 4 $\frac{1}{2}$ "

Fabric B

Cut (96) squares 4 $\frac{1}{2}$ " x 4 $\frac{1}{2}$ "

3 Dk. Gray

From each:
Cut (4) squares 5" x 5" (12 total)
Cut (12) squares 4 $\frac{1}{2}$ " x 4 $\frac{1}{2}$ " (36 total)

6 White Gray

From each:
Cut (15-16) squares 4 $\frac{1}{2}$ " x 4 $\frac{1}{2}$ "
(108 total including Fabric A squares)

5 Pink

From each:
Cut (2-3) squares 5" x 5" (12 total)
Cut (7-8) squares 4 $\frac{1}{2}$ " x 4 $\frac{1}{2}$ " (36 total)

Backing

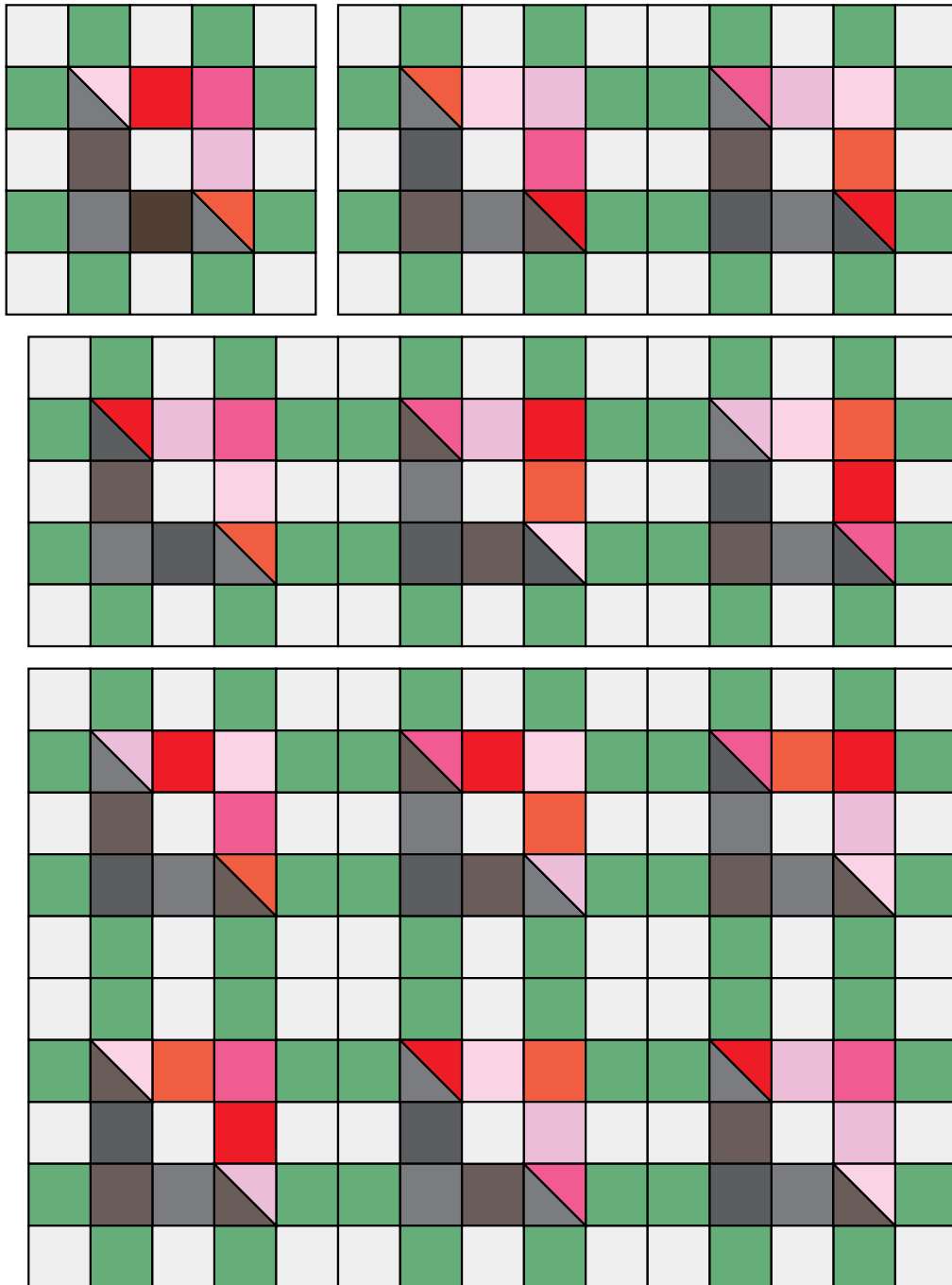
Cut (2) panels 42" x 64", pieced to fit
quilt top with overlap on all sides

Abacus Quilt

- Referring to the Quilt Diagram, join blocks in 4 rows of 3 blocks each, paying attention to the orientation of the HST. Press the seam allowances in alternating rows in opposite directions. Join the rows. Press the seam allowances in one direction or open.

Finishing the Quilt

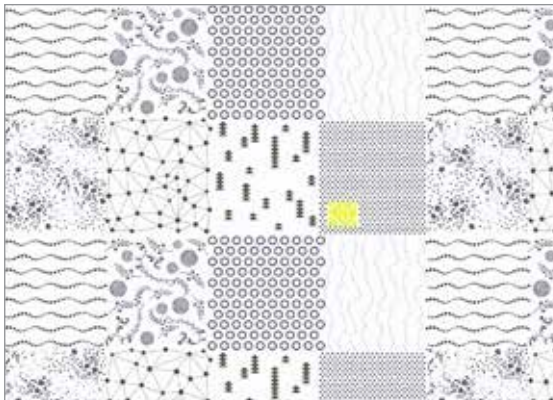
- Layer the quilt with batting and backing and baste. Quilt in the ditch around the block patches. Quilt $\frac{1}{4}$ " away from the seams of the squares and triangles, or quilt them as you wish. Bind to finish the quilt.



Quilt Diagram

Abacus

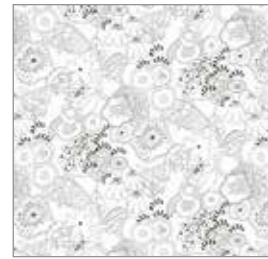
BY ALISON GLASS



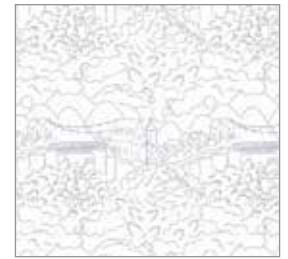
8068-C



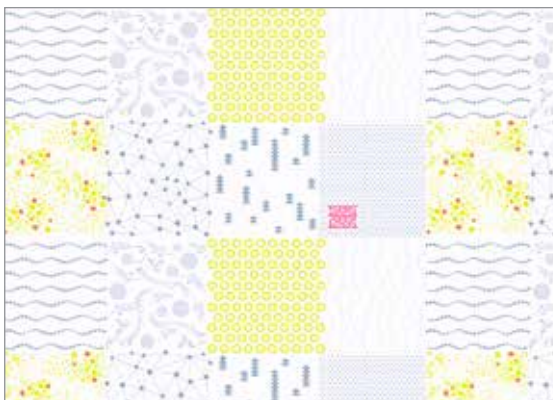
8069-C*



8070-C*



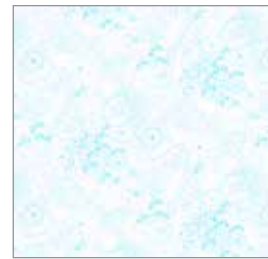
8071-C*



8068-L



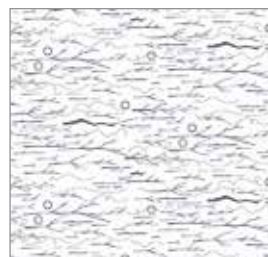
8069-G



8070-T



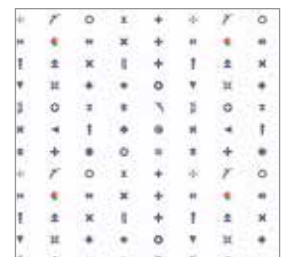
8071-O



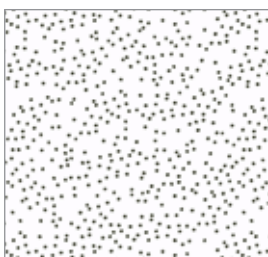
8072-C*



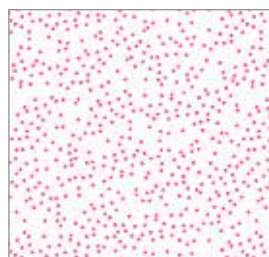
8073-B



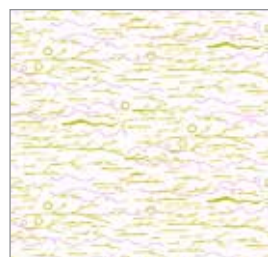
8074-C*



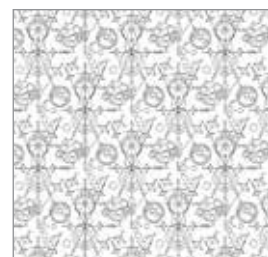
8075-C*



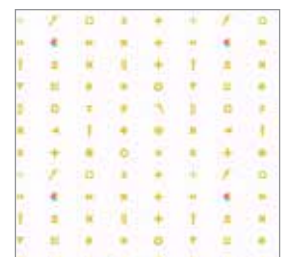
8075-E



8072-G



8073-C*



8074-ML



7752-E*



7752-N*



7752-R*



7864-C*



7866-LG*



7865-C*



7865-CE*



7867-C*



7868-CR*

All fabrics are used in quilt pattern.

Fabrics shown are 10% of actual size.

andover



makower uk
The Henley Studio

Free Pattern Download Available

1384 Broadway New York, NY 10018

Tel. (800) 223-5678 • andoverfabrics.com